

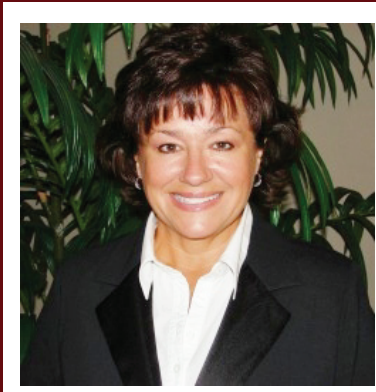
## OUR CLIENTS INCLUDE:

City of Franklin, City of Lebanon, Wilson County, Wayne County, Coffee County, Tennessee School Boards Association (TSBA), Franklin Special School District, Tullahoma City Schools, Fayette Academy...

## OUR CARRIER PARTNERS:



## OUR AGENCY STORY:



**LAURA JUNGMICHEL**  
AU, RMPE, LICENSED P & C AGENT

Laura Jungmichel formed Public Risk Insurors in March of 2011 after serving 15 years as the Director of Underwriting and Reinsurance Services for the TML Pool.

During the past four years Public Risk Insurors has experienced explosive growth, now insuring over \$750 million dollars of public entity property and over \$140 million in municipal employee payroll.

Laura and her team welcome the opportunity to work with you and your public entity in an effort to provide you with the quality of service, comprehensive coverage, and agency specialization you deserve.

# PUBLIC RISK INSURORS



**"Your Agents and Partners  
for Public Entity Insurance"**